



"So there will be one flock, one shepherd."

JOHN 10:7-18

oice

the
EPISCOPAL
CHURCH
of the
GOOD
SHEPHERD

OCTOBER 2010

Stewardship 2011: IamGS

Sheep and goats dotted the plains and hillsides of the ancient Near East, and tending these flocks and herds were shepherds. The twenty-third Psalm characterizes the love of the Lord as the concern of a good shepherd: "The Lord is my shepherd; I shall not want. He maketh me to lie down in green pastures, he leadeth me beside still waters" (Psalm 23:1-2). A good shepherd would not only see to his flock's basic provisions of food and water, but would temper his drive to guard his herd against exhaustion, predators, and thieves. In keeping watch over the flock, a good shepherd would count the sheep as they passed beneath his staff and would seek out lost lambs. A good shepherd would calve the herd's newborn and nurture its frailest members, even carrying its most vulnerable members in his arms or on his shoulders, as declared of the Lord in the vision of Isaiah: "...he will gather the lambs in his arms, and carry them in his bosom, and gently lead the mother sheep" (40:11).

Our parish family receives its name from Jesus' promise

recorded in the Gospel of John: "I am the good shepherd" (10:14). As the Good Shepherd, Jesus kept watch over his disciples and the crowds who followed him, feeding the hungry and sharing drink with those who were thirsty. As the Good Shepherd, Jesus called on the sick and lifted children into his arms. As the Good Shepherd, Jesus spent time with the lonely and lent comfort to the grieved. As the Good Shepherd, Jesus "[laid] down his life for [his] sheep" (John 10:11).

As Christians, we are at once sheep and shepherd. As a part of God's flock, we receive the Good Shepherd's attention, the gifts of God's love and company. And so, too, do we receive Jesus' commission to shepherd: feeding the hungry, welcoming the stranger, clothing the naked, and visiting the sick and imprisoned (Matthew 25:31-46). In the rhythm of our Christian life, we experience seasons as sheep and seasons as shepherds, and our inheritance of faith is not for our sake only, but for the sake of the world.

Our annual Stewardship program provides opportunity for us to reflect on our identity as sheep and shepherd; to reflect on the privilege of our gifts and to respond faithfully. This year our Stewardship theme is **IamGS**, or "I am Good Shepherd," and intends to witness our commitment to this parish family and to our commission to be one of God's good shepherds. Our Stewardship season will begin on Sunday, October 17, and conclude with the ingathering of pledges during church on Sunday, November 14. In the weeks ahead you will hear much more from our Stewardship Committee about how we will collect our discernment around our theme, and I look forward to discerning with you how each one of us has been equipped and called to give of our time, talent, and treasure for the good of God's Kingdom.

*weekly
worship
schedule*

SUNDAY

7:30 a HOLY EUCHARIST, RITE I

9:00 a HOLY EUCHARIST, RITE II

11:30 a HOLY EUCHARIST, RITE I

COMMUNION CAFÉ

6:00 p HOLY EUCHARIST, RITE II

TUESDAY

12:15 p HOLY EUCHARIST, RITE II

WEDNESDAY

12:15 p CONTEMPLATIVE PRAYER

5:30 p HEALING/HOLY EUCHARIST

THURSDAY

7:30 a HOLY EUCHARIST, RITE I

5:30 p CONTEMPLATIVE PRAYER

inside

- Children's Choirs
- Hands Across Exposition
- EpiscoPals
- Club 234
- Children's Sunday School
- Guild of the Christ Child
- Discovery Class
- Art Around the Office
- St. Anne's Guild
- Choral Evensong Reception
- Outreach Possibilities
- EYC Lock-In
- October Calendar

Guild of the Christ Child

Have you had a baby or have you welcomed a new child into your family within the past several months?

Please contact us if you've recently had a baby of if you've welcomed an adopted child. If you've not received a care package and food and would like to receive these goodies, please let us know by contacting Kathy Pfister at kpffister@gsaustin.org.

Discovery Class is Coming!

If you would like to be confirmed in the Episcopal Church or simply learn more about what it means to think, live, and love as a follower of Jesus, please

join us for one of our Discovery weekends – November 5-6 OR December 3-4. Using a retreat format, we will gather on Friday from 6 p.m. to 9 p.m. and on Saturday from 9 a.m. to 3 p.m. Meals will be provided (dinner on Friday; breakfast and lunch on Saturday) and childcare is available (please let us know how many children to expect). For more information or to sign up, please contact The Rev. Kelly Koonce in the church office: kkoonce@gsaustin.org; 476-3523. Reservations are REQUIRED.

Daughters of the King

Tuesday, October 19 the DOK will meet at the home of Barbara Cummings for a board meeting. This is a significant meeting for our organization: Please mark your calendar and note that all DOK members are welcome. Now that our Secretary-Treasurer, Barbara Terhune, is back from New Hampshire, we will meet and discuss the following agenda: Minutes, Dues Report, Ministry Council Report, Lenten Meditations Plan, Appointment of our chapter chaplain: Kathy Pfister, Liaison with Outreach, Conformity with national expectations: Chapter file in church, Dispensation of Cross Cards, Denise Vaughn's address, Visit with Children's Chorus, Election of Officers. If you have any questions, comments or suggestions, or would simply like more information, please contact Marion Mark at 477-2753.

St. Anne's Guild

On Tuesday, October 26, we are fortunate to have a distinguished member of our parish, Pam Willeford speaking to St. Anne's Guild. Pam will be speaking of her experiences as Ambassador to Switzerland and Liechtenstein. We are looking forward to this gathering and encourage all to attend (even if you are not a member of St. Anne's Guild). There will be coffee and other goodies available before the meeting.

FOR MORE INFORMATION, contact Marilyn Devine at mardev@juno.com

Rhythms of Grace at the 109th ECW Annual Retreat

Join women from across the Diocese at The 109th ECW Annual Retreat hosted by the women of St. Mark's. The annual event will be Friday and Saturday, October 15-16 at the historic downtown Beaumont church. With the theme Rhythms of Grace, the two day event will include inspirational worship, breath-taking music, unique and enlightening workshops, wind down and relaxation time and opportunities to connect with other sisters in Christ. The host hotel is the Holiday Inn Plaza on Interstate 10 in Beaumont and accommodation details can be found in the registration information.

Event details and registration information is available on the ECW page of the Diocese's website at www.epicenter.org or contact Gail Davis, ECW Annual Retreat Registrar at 409-832-3405 or gdavis8@gt.rr.com.



Prayer Shawl

The Prayer Shawl Ministry Guild will meet on Friday, October 8th at 10:30 a.m. in the Administration Building Conference Room. All are welcome. This group produces lovely, prayerfully hand knit or crocheted shawls or blankets that are presented in the church for blessing. Then they are delivered to people who are in need of comfort, warmth, and prayers. For more information call Betty Hendrix, 467-1868.

ART AROUND THE OFFICE

Parishioner **LAURA SIKES BARROW** will host a wine and cheese reception to celebrate the installation of her paintings in the Church Administration Building, and...

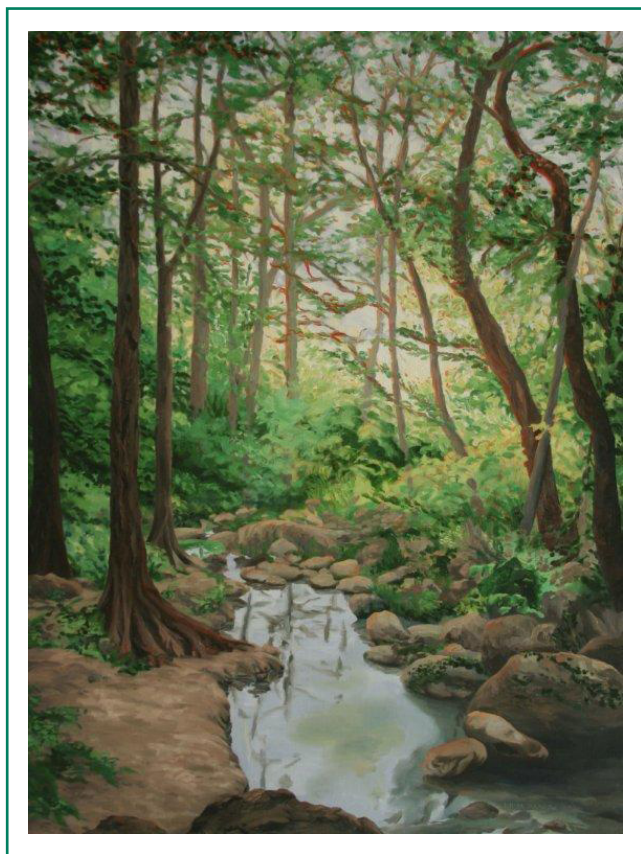
YOU'RE INVITED!

WHEN: *Wednesday, October 13,
from 5:00 until 7:30 pm*

WHERE: *Administration Building,
Good Shepherd Church*

WHY: *To see some beautiful art and visit
with the artist, a member of your
church family*

WHO: *Everyone, including the kids
(snacks for them as well)*



DURUFLÉ REQUIEM

SUNDAY, OCTOBER 31, AT 9:00 AND 11:30 AM

The Episcopal Church of the Good Shepherd this year continues its traditional commemoration of the Feast of All Saints by offering Maurice Duruflé's Requiem as the service music on Sunday, October 31, at 9:00 and 11:30 am. The Requiem is Duruflé's greatest and best known work, a testament of faith, comfort and tranquility. Many of its melodies are based on Gregorian chant, but are colored with French Impressionistic harmonies. A highlight is the radiant Sanctus, which builds to a crescendo of "Hosannas"; the finale is a soft song of paradise.

Maurice Duruflé himself wrote: "The Requiem reflects Man's anguish as he contemplates the ultimate mystery of life and death. The music is at times dramatic or filled with a sense of resignation, hope or fear, mirroring the words of the Scriptures which form the liturgy." The Good Shepherd Choir is delighted to have the opportunity to share this masterwork with the entire congregation in worship.

CHORAL EVENSONG & RECEPTION

This month the Evensong Choir sings not only our regularly scheduled Evensong at Good Shepherd on the second Sunday of the month, but also a special Evensong as part of St Austin's With One Voice: Sacred Sounds in a Sacred Space series. Both services will feature canticles by Thomas Tallis and an anthem by Alessandro Scarlatti.

Please join us on Sunday, October 10, at 6:00 pm at Good Shepherd for Choral Evensong. A reception for our new Choirmaster, Jonathan Babcock, will follow the service at Good Shepherd. If you have not met him yet, this will be a perfect opportunity to do so.

On Monday, October 18 (Feast of St. Luke), at 7:30pm the Good Shepherd Choir will also be singing at St. Austin Roman Catholic Church. The service at St Austin will be enriched by sumptuous acoustics and one of the finest organs in Austin, as well as additional organ voluntaries and chant proper to the Feast of St Luke the Evangelist. In addition to the spiritual benefits of the liturgy, this is a wonderful ecumenical opportunity for our two parishes and the larger community that you won't want to miss.

SUNDAY

MONDAY

TUESDAY

3

XIX Pentecost

7:30a **Holy Eucharist, Rite I** (CR) 11:00a Choir Rehearsal (CR)
 8:30a Choir Rehearsal (CR) 11:30a **Communion Café Worship** (PH)
 Coffee Hour (PH) **Holy Eucharist, Rite I** (CH)
 9:00a **Holy Eucharist, Rite II** (CH) Junior Choir (CR)
 Pre-school Sunday School (EB) 3:00p EYC (MH)
 Children's Chapel (BH) 6:00p **Holy Eucharist, Rite II** (CH)
 10:15a Parish Breakfast (PH)
 10:45a Christian Education (PH, BH, MH)
 Club 234 (PG)

4

9:15a Tellers
 6:30p Men's Bible & Brew (CO)

5

7:30a Yoga (MH)
 8:30a Yoga (MH)
 9:30a Young Mom's Study (CR)
 12:15p **Holy Eucharist, Rite II** (CH)
 3:30p Clergy Program &
 Prayer Meeting (RO)
 4:30p Primary Choir (CR)
 5:30p Ministry Council
 Wine & Cheese (PH)
 8:00p Late Night @ GS (CO)

10

XX Pentecost

7:30a **Holy Eucharist, Rite I** (CH) 11:30a **Communion Café Worship** (PH)
 8:30a Choir Rehearsal (CR) **Holy Eucharist, Rite I** (CH)
 Coffee Hour (PH) Junior Choir (CR)
 9:00a **Holy Eucharist, Rite II** (CH) 2:00p **Holy Eucharist** (Arden Courts)
 Pre-school Sunday School (EB) 3:00p EYC (MH)
 Children's Chapel (BH) 6:00p **Choral Evensong** (CH)
 10:15a Parish Breakfast (PH)
 10:45a Christian Education (PH, BH, MH)
 Club 234 (PG)
 11:00a Choir Rehearsal (CR)

11

9:15a Tellers
 6:30p Men's Bible & Brew (CO)

12

7:30a Yoga (MH)
 8:30a Yoga (MH)
 9:30a Young Mom's Study (CR)
 12:15p **Holy Eucharist, Rite II** (CH)
 3:30p Clergy Program &
 Prayer Meeting (RO)
 4:30p Primary Choir (CR)
 8:00p Late Night @ GS (CO)

17

Stewardship I • XXI Pentecost

7:30a **Holy Eucharist, Rite I** (CH) 11:30a **Communion Café Worship** (PH)
 8:30a Choir Rehearsal (CR) **Holy Eucharist, Rite I** (CH)
 Coffee Hour (PH) Junior Choir (CR)
 9:00a **Holy Eucharist, Rite II** (CH) 12:30p Stewardship Teams'
 Pre-school Sunday School (EB) Meeting (PH)
 Children's Chapel (BH) 2:00p **Holy Eucharist** (Arboretum)
 10:15a Parish Breakfast (PH) 2:30p **Holy Eucharist** (Continental)
 10:45a Christian Education (PH, BH, MH) 3:00p EYC (MH)
 Club 234 (PG) 6:00p **Holy Eucharist, Rite II** (CH)
 11:00a Choir Rehearsal (CR) 7:30p **Choral Evensong**
 (St. Austin's Catholic Church)

18

9:15a Tellers
 6:30p Men's Bible & Brew (CO)

19

7:30a Yoga (MH)
 Endowment Comm. Mtg. (CO)
 8:30a Yoga (MH)
 9:30a Young Mom's Study (CR)
 12:15p **Holy Eucharist, Rite II** (CH)
 3:30p Clergy Program &
 Prayer Meeting (RO)
 4:30p Primary Choir (CR)
 8:00p Late Night @ GS (CO)

24

Stewardship II • XXII Pentecost

7:30a **Holy Eucharist, Rite I** (CH) 11:30a **Communion Café Worship** (PH)
 8:30a Choir Rehearsal (CR) **Holy Eucharist, Rite I** (CH)
 Coffee Hour (PH) Junior Choir (CR)
 9:00a **Holy Eucharist, Rite II** (CH) 3:00p EYC (MH)
 Pre-school Sunday School (EB) **Holy Eucharist** (Querencia)
 Children's Chapel (BH) 6:00p **Holy Eucharist, Rite II** (CH)
 10:15a Parish Breakfast (PH)
 10:45a Christian Education (PH, BH, MH)
 Club 234 (PG)
 11:00a Choir Rehearsal (CR)

25

9:15a Tellers

26

7:30a Yoga (MH)
 8:30a Yoga (MH)
 9:30a Young Mom's Study (CR)
 10:30a St. Anne's Guild (CR)
 12:15p **Holy Eucharist, Rite II** (CH)
 3:30p Clergy Program &
 Prayer Meeting (RO)
 4:30p Primary Choir (CR)

**CLERGY CONFERENCE
 CAMP ALLEN**

**CLERGY CONFERENCE
 CAMP ALLEN**

31

Stewardship III • XXIII Pentecost

7:30a **Holy Eucharist, Rite I** (CH) 11:30a **Communion Café Worship** (PH)
 8:30a Choir Rehearsal (CR) **Holy Eucharist, Rite I** (CH)
 Coffee Hour (PH) Junior Choir (CR)
 9:00a **Holy Eucharist, Rite II** (CH) 6:00p **Holy Eucharist, Rite II** (CH)
 Pre-school Sunday School (EB)
 Children's Chapel (BH)
 10:15a Parish Breakfast (PH)
 10:45a Christian Education (PH, BH, MH)
 Club 234 (PG)
 11:00a Choir Rehearsal (CR)

WEDNESDAY	THURSDAY	FRIDAY	SATURDAY
<p>6</p> <p>7:00a Men's Breakfast & Bible Study (PH)</p> <p>11:00a Women's Prayer Group (BR)</p> <p>12:15p Contemplative Prayer (CH)</p> <p>1:00p Staff Meeting (CO)</p> <p>2:30p Convocational Clergy Group (BR)</p> <p>5:30p Healing/Holy Eucharist (CH)</p> <p>6:00p Women on the Journey (BR)</p> <p>6:45p Evensong Choir Rehearsal (CR & CH)</p> <p>7:30p Choir Rehearsal (CR & CH)</p>	<p>7</p> <p>7:30a Yoga (MH)</p> <p>Holy Eucharist, Rite I (CH)</p> <p>8:30a Yoga (MH)</p> <p>10:30a Thursday Morning Women's Study (CR)</p> <p>5:30p Contemplative Prayer (CH)</p> <p>6:30p EfM (CO)</p>	<p>1</p> <p>10:30a Women on the Journey (BR)</p>	<p>2</p> <p>9:00a Altar Guild (CH)</p>
<p>13</p> <p>7:00a Men's Breakfast & Bible Study (PH)</p> <p>11:00a Women's Prayer Group (BR)</p> <p>12:15p Contemplative Prayer (CH)</p> <p>1:00p Staff Meeting (CO)</p> <p>5:30p Healing/Holy Eucharist (CH)</p> <p>6:00p Women on the Journey (BR)</p> <p>6:45p Evensong Choir Rehearsal (CR & CH)</p> <p>7:30p Choir Rehearsal (CR & CH)</p>	<p>14</p> <p>7:30a Yoga (MH)</p> <p>Holy Eucharist, Rite I (CH)</p> <p>8:30a Yoga (MH)</p> <p>10:30a Thursday Morning Women's Study (CR)</p> <p>5:30p F&A Meeting (RO)</p> <p>5:30p Contemplative Prayer (CH)</p> <p>6:30p EfM (CO)</p>	<p>15</p> <p>10:30a Women on the Journey (BR)</p>	<p>16</p> <p>9:00a Altar Guild (CH)</p> <p>7:00p Wedding (CH)</p>
<p>20</p> <p>7:00a Men's Breakfast & Bible Study (PH)</p> <p>11:00a Women's Prayer Group (BR)</p> <p>12:15p Contemplative Prayer (CH)</p> <p>1:00p Staff Meeting (CO)</p> <p>3:30p Holy Eucharist (Westminster)</p> <p>5:30p Healing/Holy Eucharist (CH)</p> <p>6:00p Vestry (PH)</p> <p>Women on the Journey (BR)</p> <p>6:45p Evensong Choir Rehearsal (CR & CH)</p> <p>7:30p Choir Rehearsal (CR & CH)</p>	<p>21</p> <p>7:30a Yoga (MH)</p> <p>Holy Eucharist, Rite I (CH)</p> <p>8:30a Yoga (MH)</p> <p>10:30a Thursday Morning Women's Study (CR)</p> <p>5:30p Contemplative Eucharist (CH)</p> <p>6:30p EfM (CO)</p>	<p>22</p> <p>10:30a Women on the Journey (BR)</p>	<p>23</p> <p>9:00a Altar Guild (CH)</p>
<p>27</p> <p>7:00a Men's Breakfast & Bible Study (CH & PH)</p> <p>11:00a Women's Prayer Group (BR)</p> <p>12:15p Contemplative Prayer (CH)</p> <p>5:30p Healing/Holy Eucharist (CH)</p> <p>6:00p Women on the Journey (BR)</p> <p>6:45p Evensong Choir Rehearsal (CR & CH)</p> <p>7:30p Choir Rehearsal (CR & CH)</p> <p>CLERGY CONFERENCE CAMP ALLEN</p>	<p>28</p> <p>7:30a Yoga (MH)</p> <p>Holy Eucharist, Rite I (CH)</p> <p>8:30a Yoga (MH)</p> <p>10:30a Thursday Morning Women's Study (CR)</p> <p>5:30p Contemplative Prayer (CH)</p> <p>6:30p EfM (CO)</p>	<p>29</p> <p>10:30a Women on the Journey (BR)</p>	<p>30</p> <p>9:00a Altar Guild (CH)</p>

OCTOBER

the
**EPISCOPAL
 CHURCH**
of the
**GOOD
 SHEPHERD**



Children's Choirs

ARE FOR KINDER AND OLDER

Singing, laughing, serving, moving, leading, creating, growing, learning; these are but a few of the reasons why choir may be for you!

If you are Kinder or older and would like to do any of the above with a group that is welcoming, accepting, and fun, join us for choir. Reading or music reading experience is not required.

JUNIOR CHOIR

meets on Sundays from 11:30a - 12:30p

PRIMARY CHOIR

will begin on Tuesday, October 5, from 4:30p - 5:30p

Both choirs meet in the Choir Room.
For more information, please contact Jeane Burks.

Children's Sunday School

What energy and joy we've been experiencing these past weeks in Sunday School! With dedicated Core Teachers and committed parents, with spaces appropriate for and conducive to learning, we've begun our fall with a bang and we thank each of you for your part in making it so. If you have not received the Volunteer Spot link to sign up for helping in Sunday School please email Jeane Burks. We rely on the efforts of all parents so that we can both provide proper ratios and, offer an optimal Sunday morning experience. Also, be sure to enroll in Sunday School and all other church ministries by visiting www.lamgs.org.

Club 234

ON THE PLAYGROUND AT 10:45 AM

2s, 3s, and 4s are automatically a member of Club 234 while their parents either attend Adult Sunday School or, teach Kinder - Middle School Sunday School. All that is required is to bring your preschooler to the playground, sign them in, and then sign up to help a few times. You'll not want to miss the adult Sunday School's topic "The Devil and All his Works" so, bring your preschooler to the Club!

EpiscoPals

AGES 4TH GRADE AND OLDER

If you enjoy working with 2s, 3s, or 4-year olds, consider being an EpiscoPal in Preschool Sunday School. EPals interact with the children and they assist the adult teachers in various ways. In return, EPals form deeper relationships with both their students and teachers as well as learn valuable skills in how to relate to and care for our very youngest. If you are a returning EPal or would like to enroll for the first time, please contact Jeane Burks so that you can be added to the schedule.

The commitment is for 4 Sundays per semester and, a required training will be held soon.

hands across exposition



THANK YOU TO ALL who participated in Hands Across Exposition. We were grateful to have gathered together with our Exposition neighbors for fun, singing, eating, and more and we give special thanks to all of you who helped make the event happen.



eye kick-off!

On Sunday, September 12th EYC started the year off right with an afternoon of sticky, messy chaos. We played in baby pools of Jello, smothered each other with shaving cream, launched water balloons into the air, and ended with two 50-foot slip and slides. We had 30 youth show up for the event and we had a BLAST! EYC continues to meet on most Sundays from 3:00 to 4:30 for fun and fellowship. Join us, whether it's your first time or you're a regular!

SAVE THE DATE:

eye lock-in!

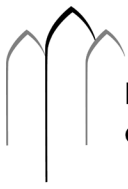
Youth, prepare yourselves. EYC is having an epic lock-in on Friday, October 29th into the morning of Saturday, Oct. 30th. We can't give away too many of the details just yet, but here are a few sneak peaks: food, games, a midnight field trip, and lots and lots of Dr. Pepper. Mark your calendars and invite your friends!



Imagine the Outreach Possibilities...

IF YOU WERE TO STOP AND TRULY IMAGINE the possibilities for outreach here at Good Shepherd, you would quickly discover that the possibilities for helping others are nearly endless. Here at Good Shepherd, outreach is a part of our identity. It is a part of who we are as a church. Serving as the hands and feet of Christ, we reach beyond our doors into the Austin community and beyond. Through programs like Meals on Wheels, Trinity Streets, Dress for Success, Family Outreach Team, Christmas Giving Tree, North Loop Apartments, Shepherd Bags, and many more, the people of Good Shepherd give of their time and efforts to bring aid to people in need. Did you know that we more than tithe the current budget back into the community? We currently support both local and diocesan ministries and programs through giving more than 10 percent of our budget to outreach efforts. Now imagine the possibilities if every member at GS joined one of our many outreach ministries. Imagine the possibilities if every member at GS gave at least one hour a month to volunteering with an outreach. Imagine the possibilities if every member at GS stepped out even further in faith to bring aid to the hurting world around us. Imagine the possibilities! What we do here at Good Shepherd will change the world for the kingdom of God.

THE OUTREACH COMMITTEE is currently seeking to grow the many different areas of outreach ministry into larger outreach ministry programs that bring deeper and more meaningful connections. Please contact The Rev. Chris Duncan in the church office or by email at chris@gsaustin.org to find out how you can join us. We invite you to imagine the possibilities and help us change the world for the kingdom of God.



**Episcopal Church
of the Good Shepherd**

P.O. Box 5176 ■ Austin, TX . 78763

3201 Windsor Road ■ Austin, TX . 78703

WEB: www.gsaustin.org

EMAIL: info@gsaustin.org

PRAYER REQUESTS: prayer@gsaustin.org

PHONE: 512.476.3523

FAX: 512.476.3562

ADDRESS SERVICE REQUESTED

Non-Profit Org.
US Postage Paid
Austin, Texas
Permit No. 1498

MEMORIALS AND HONORARIA AUGUST/SEPTEMBER 2010

**In Memory of
Catharine (Kitty) Baxter**

Julia and Laurens Fish

**In Memory of
Bill Doctorman**

Nancy and Bill Abington

**In Memory of
Arline Bolm Fitzpatrick**

Chris Allen
Kathy and Bennie Bock
Mac and William Cromwell
Melanie and Laurens Fish, III
Mr. and Mrs. Jason Fortenberry
Barbara and Jimmy Gaines
Beth and Tom Granger
Mr. and Mrs. Keith Griffith
Sally Harner
Matthew and Rita Kreisle
Moore, Camp, Phillips, Patterson
Courtney and Mary Townsend
J. Sam and Dorothy Winters

**In Memory of
August Watkins Harris, Jr.**

Carol C. Nelson

**In Memory of
Frank Roberts Miller**

Bill Abington
Martha and Taylor Blanton
Lutie and Bob Butler
Leighton and Jim Donnell
Eloise K. Evans
Judy and Tom Fairey
Mr. and Mrs. Joe Fallon
Julia and Laurens Fish
Olivia Fisher
Nancy and Bill Gamel
George Ann and Jeff Geeslin
Lukin Gilliland
Steve and Kate Goode
General and Mrs. Spencer Hardy
Ben and Mary Gwen Hulsey
Kathy and Frank Ikard
Charles and Marilyn Kinney
Matthew and Rita Kreisle
Maline and Dudley McCalla
Nancy LeNoir
Marilyn and Jim McDonald
Lolla and Billy Page
Dianne and Hervey Priddy
Kathryn Priddy
Mr. and Mrs. M.P. Roche

Joanie and Lindsay Sharpe
Carole and Charles Sikes
St. Stephens Episcopal School
Gay and Sam Stone
Donna Kennedy Vogel
Mr. and Mrs. Wm. R. Wiggins
J. Sam and Dorothy Winters

**September 2010
Memorial Endowment**

Ben and Mary Ann Frishman

In Honor of Nancy B. Wade

Bettie and Doyle High